

# State of Wyoming Corner Record

(In compliance with the *CORNER PERPETUATION AND FILING ACT*, Wyoming Statutes, 1997, Section 33-29-140, et seq., and the Rules and Regulations of the Board of Registration for Professional Engineers and Professional Land Surveyors)

Reverse side of this form may be used if more space is needed.

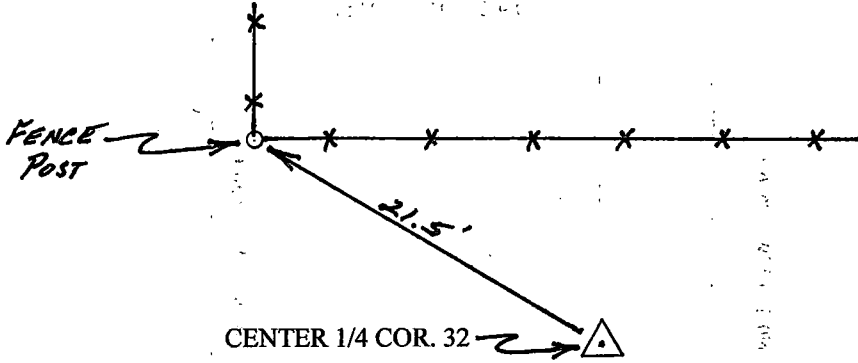
Record of original survey and citation of source of historical information (if corner is lost or obliterated). Description of corner monumentation evidence found and/or monument and accessories established to perpetuate the location of this corner. Sketch of relative location of monument, accessories, and reference points with course and distance to adjacent corner(s) (if determined in this survey). Method and rationale for reestablishment of lost or obliterated corner.

**Center Quarter Corner:** Sections 32, T14N, R61W, 6<sup>th</sup> PM, Laramie County, Wyoming

**GLO record:** N/A

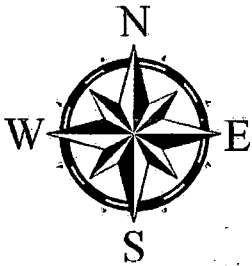
**Found:** N/A

**Set:** 2" dia. Aluminum cap properly stamped, with LS 4828.



RECP #: 816098

RECORDED 7/29/2021 AT 12:09 PM BK# 2746 PG# 3109  
Debra K. Lee, CLERK OF LARAMIE COUNTY, WY PAGE 1 OF 2



Date of Field Work: July 2021 SCALE 1" = 10'

SEE SECTION TIES ON REVERSE  
Office Reference: \_\_\_\_\_

### CROSS INDEX DIAGRAM

	1	2	3	4	5	6	7	8	9	10	11	12	13	14	15	16	17	18	19	20	21	22	23	24	25
A																									
B																									
C		6			5					4					3					2					1
D																									
E																									
F																									
G																									
H																									
J																									
K																									
L																									
M																									
N																									
O																									
P																									
Q																									
R																									
S																									
T																									
U																									
V																									
W																									
X																									
Y																									
Z																									

Land Surveyor / Firm / Address

John J. Studley, PLS No. 4828

615 West Dale Blvd.

Cheyenne, WY 82001

Telephone: 307-287-4755

This corner record was prepared by me or under my direction and supervision.

SEAL & SIGNATURE

